

2CM PAVERS

Porcelain



citytile ltd



ADZ Nilo Natural
24x48



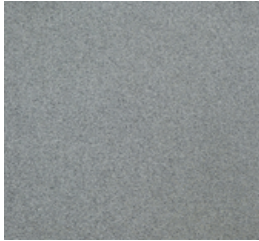
Colorado Light Grey
24x24, 24x48



Colorado Dark Grey
24x24, 24x48



Colorado Beige
24x24



BST02 Grey
24x24



BST01 Black
24x24



TRV 01 Cream
24x24



TRV 02 Light Grey
24x24



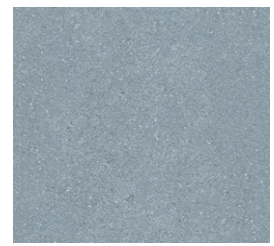
GP 017 Black
24x48



Artena Grey
24x24



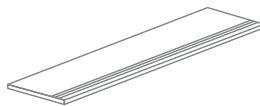
Lodge Light Grey
24x24



Lodge Dark Grey
24x24



Silver Grain Grey
24x48



Round Stair Nosing
12x24x2cm
Available in TRV01,
TRV02, BST01, BST02



Square Stair Nosing and corners
24x16x2cm
Available in Artena Grey, Lodge
and Colorado

Recommended applications

- | | |
|-------------------|----------------------|
| Light commercial | Shower/ steam shower |
| Medium commercial | Outdoor |
| Heavy commercial | Indoor |

Characteristics of tile

- | | | |
|-----------------|----------------|---------------------|
| Low maintenance | Fade resistant | Resistant to fungus |
| Stain resistant | Hypoallergenic | Frost Resistance |

Technical specifications

Breaking Strength	>8000	MOHS	n/a
PEI	n/a	Tile thickness	20 mm
Resistance to Deep Abrasion	145mm ³	Slip Resistance	DCOF>0.55
Resistance to Surface Abrasion	n/a	Variation	V2 V3
Water Absorption	n/a	Moisture Rating	1- Impervious

Special instructions

Shade variations between tiles is characteristic. Colour may vary from sample.
Technical data is supplied by the manufacturer and is subject to change at anytime.

Burnaby: 4330 Halifax Street T: 604-298-6252
Port Coquitlam: 1110-1579 Kingsway Ave T: 778-948-9854
Nanaimo: 4337 Boban Drive T: 250-729-9766
Courtenay: 2-2989 Kilpatrick Ave T: 250-871-3122
citytile.ca

